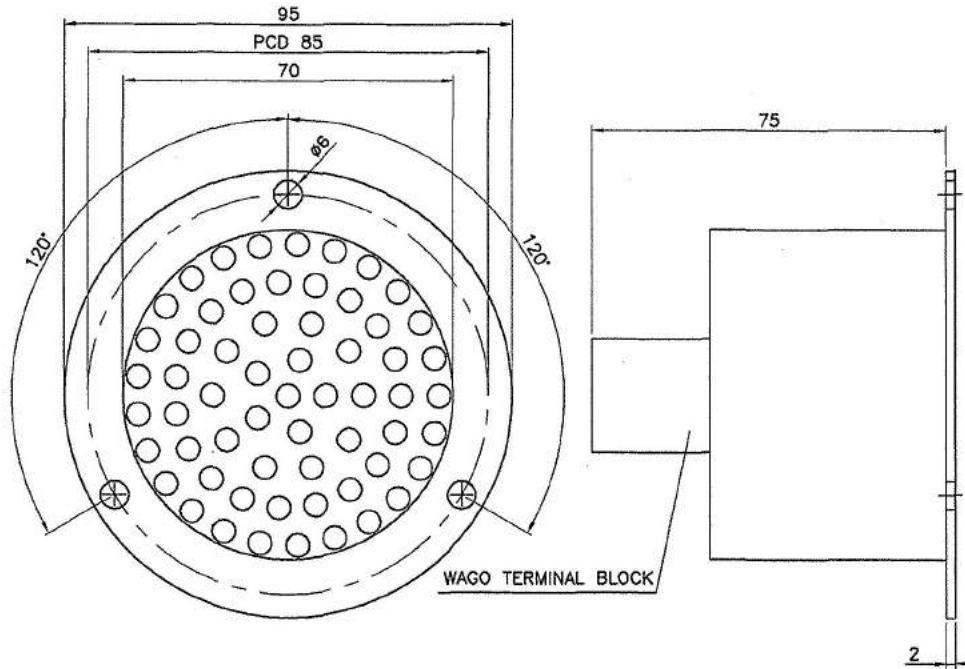


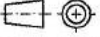
**Additional Terms and Conditions for Bidders (including Pre-Qualification requirements)****ATC for “LED Cluster Light (Amber)”.****Additional Terms and conditions:**

<b>S. No</b>	<b>Description of requirement</b>	<b>Document to be attached</b>
1	Bidder should submit a self-declaration stating that, “Offered item is same as per enquiry and there is no deviation”.	Self-declaration on letterhead of firm.
2	Data Sheet / Drawings / Catalogues of the product (s) offered in the bid, are to be uploaded along with the bid documents. Buyers can match and verify the Data Sheet with the product specifications offered. In case of any unexplained mismatch of technical parameters, the bid is liable for rejection	Data Sheet / Drawings / Catalogues of the product (s)
3	In case Bidder is not be OEM but its Reseller then bidder to submit valid authorisation certificate from OEM with the bid.	Authorisation certificate
4	<b>Registration / Empanelment Requirement:</b> Contract shall be awarded to only such bidder or their OEM (in case of reseller), who are approved by ICF/RDSO/Indian Railways for the <b>LED Cluster Light (Amber)</b> for DETC (Diesel Electric Tower Car) application on the date of bid opening to qualify for this tender.	Supporting document of approval.

ICF / SK<sub>3</sub>-7-6-023**LED CLUSTER LIGHT - 7W**

## ☆ TECHNICAL SPECIFICATION

- 1) I/P VOLTAGE RANGE : 110V DC (SUITABLE FOR 90V-140V DC)
- 2) LED FORWARD VOLTAGE : 3.3V TYP. AT 20mA
- 3) COMPONENT RATING : HIGH VOLTAGE RATED 630V INDUSTRIAL GRADE
- 4) LIGHT OUTPUT : 25 LUX AT 2 METER DISTANCE
- 5) NO. OF LED'S : 60 LED'S / LAMP
- 6) LUMINOUS INTENSITY : 6000 mcd / LED AT 20mA
- 7) HOUSING MATERIAL : ALUMINIUM HOUSING (PROVIDES GOOD HEAT SINK)
- 8) LED TYPE : 5.0mm
- 9) LENSE : WATER CLEAR
- 10) COLOUR : RED / AMBER
- 11) LED BEAM ANGLE : 120 DEGREE

-	-	-	1	LED CLUSTER LIGHT-AMBER (7W)	2				☆ SEE TECH.SPEC.														
-	-	-	1	LED CLUSTER LIGHT-RED (7W)	1				☆ SEE TECH.SPEC.														
NO. OFF				DESCRIPTION & DIMENSIONS	ITEM	REF.DRGS.	MAT. SPEC.	WEIGHT/UNIT	REMARKS														
IV	III	II	I	GROUP:- 7-5						SUPERSEDED BY:													
LED CLUSTER LIGHT									SUPERSEDES:														
									SCALE	SSE/D	Ind												
									1:1	CHD													
										ALT.													
										DRN	J.DOMINIC VINCENT												
									ALT.														
CAD FILE: ED-CAD\329 7-6 023---00.DWG																							
DATA CODE No.		INDIAN RAILWAY STANDARDS										SHEET				INTEGRAL COACH FACTORY CHENNAI-38							
329												1 OF 1											
																		ICF / SK <sub>3</sub> -7-6-023					